



**Features & benefits** ↓

- Made of aramid reinforced nitril rubber NBR
  - No corrosion
  - Durable
- Reinforced with 3 aramide inlays
  - Lightweight
  - Highly flexible
  - Proven durability
- Revolutionary non-slip design
  - Maximum grip on all surfaces
  - Interlocking when 2 bags are placed on top of each other
- Unique lower profile edges; easy insertion under all circumstances
- CE-icons; optimal safety for the user
- Light reflecting labels on top side; better visibility in dark environment which improves safety and user friendliness
- Centring cross on both sides; easy and safe positioning

**Standard** supplied with ↓

- "Autolock" couplers; quick connection with automatic double locking system
- Carrying straps on HLB 40 and HLB 67

**Available** on request ↓

- Lifting capacity / height diagrams per model

Lifting Capacity / Height Diagrams	page	109
Hoses	page	110
Operating Valves	page	111
Accessories	page	112
Control Sets	page	113

**Lifting Bags - Lifting Bags** ↓

model		HLB 1	HLB 3	HLB 5	HLB 10	HLB 12	HLB 18
art no		350.321.003	350.321.004	350.321.006	350.321.007	350.321.008	350.321.009
max. working pressure	bar/Mpa	8 / 0.8	8 / 0.8	8 / 0.8	8 / 0.8	8 / 0.8	8 / 0.8
max. inflation height	mm	80	130	150	215	225	240
thickness incl. profile	mm	22	22	22	25	25	25
max. lifting capacity	kN/t	10 / 1	35 / 3.6	50 / 5.1	100 / 10.2	120 / 12.2	180 / 18.4
air content (8 bar)	l	6.3	16.2	22.5	76.5	90	171
water content (8 bar)	l	0.7	1.8	2.5	8.5	10	19
min. bursting pressure	bar/Mpa	32 / 3.2	32 / 3.2	32 / 3.2	32 / 3.2	32 / 3.2	32 / 3.2
weight, ready for use	kg	0.6	1.5	2.0	3.8	5.0	6.8
dimensions (LxW)	mm	150 x 150	228 x 228	270 x 270	380 x 380	408 x 408	660 x 360



**Features & benefits** ↓

- Made of aramid reinforced nitril rubber NBR
  - No corrosion
  - Durable
- Reinforced with 3 aramide inlays
  - Lightweight
  - Highly flexible
  - Proven durability
- Revolutionary non-slip design
  - Maximum grip on all surfaces
  - Interlocking when 2 bags are placed on top of each other
- Unique lower profile edges; easy insertion under all circumstances
- CE-icons; optimal safety for the user
- Light reflecting labels on top side; better visibility in dark environment which improves safety and user friendliness
- Centring cross on both sides; easy and safe positioning

**Standard** supplied with ↓

- "Autolock" couplers; quick connection with automatic double locking system
- Carrying straps on HLB 40 and HLB 67

**Available** on request ↓

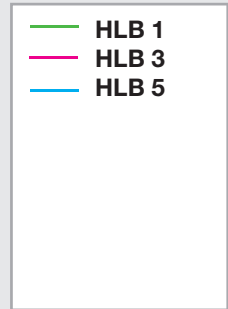
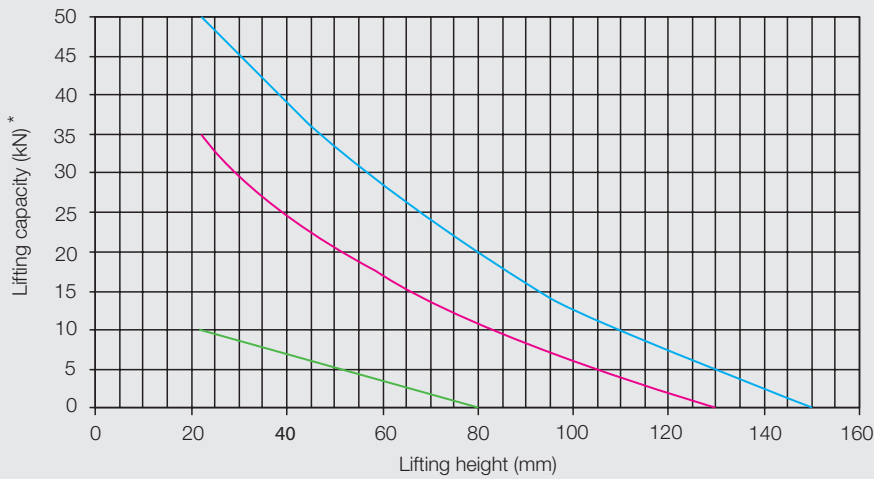
- Lifting capacity / height diagrams per model

Lifting Capacity / Height Diagrams	page	109
Hoses	page	110
Operating Valves	page	111
Accessories	page	112
Control Sets	page	113

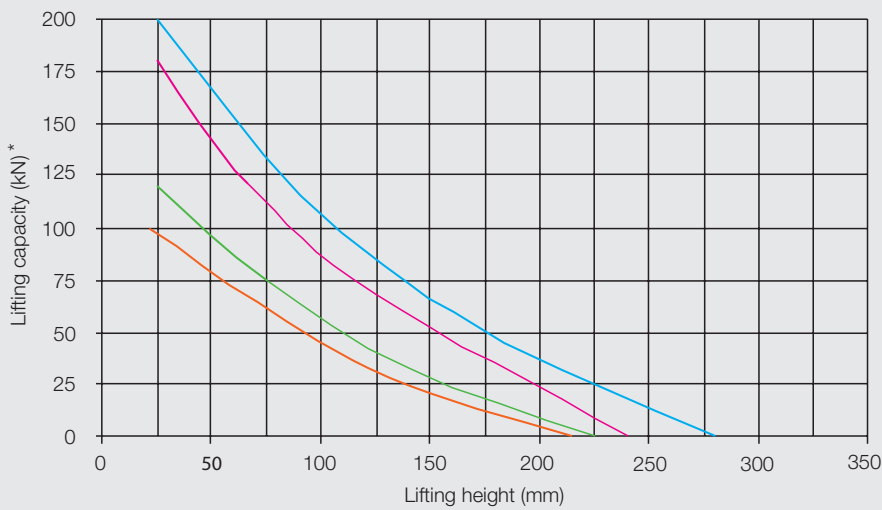
**Lifting Bags - Lifting Bags** ↓

model		HLB 20	HLB 24	HLB 29	HLB 32	HLB 40	HLB 67
art no		350.321.010	350.321.012	350.321.017	350.321.013	350.321.014	350.321.015
max. working pressure	bar/Mpa	8 / 0.8	8 / 0.8	8 / 0.8	8 / 0.8	8 / 0.8	8 / 0.8
max. inflation height	mm	290	215	348	380	405	520
thickness incl. profile	mm	25	25	25	25	25	25
max. lifting capacity	kN/t	200 / 20.4	240 / 24.5	300 / 30.6	320 / 32.6	400 / 40.8	670 / 68.3
air content (8 bar)	l	189	216	373	450	558	1206
water content (8 bar)	l	21	24	41.5	50	62	134
min. bursting pressure	bar/Mpa	32 / 3.2	32 / 3.2	32 / 3.2	32 / 3.2	32 / 3.2	32 / 3.2
weight, ready for use	kg	6.7	9.5	9.8	13.0	15.1	23.5
dimensions (LxW)	mm	508 x 508	1000 x 310	611 x 611	658 x 658	714 x 714	903 x 903

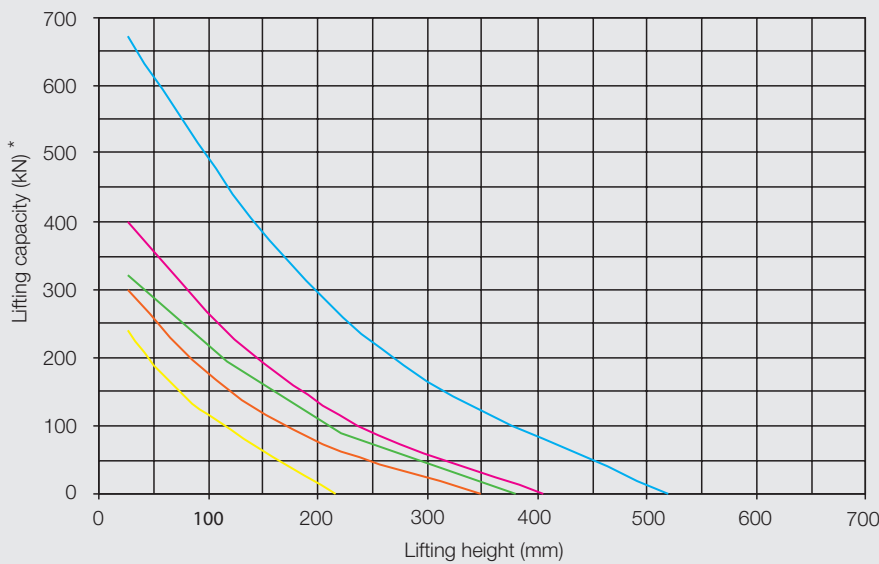
**Diagram 1 - HLB 1 up to 5**



**Diagram 2 - HLB 10 up to 20**



**Diagram 3 - HLB 24 up to 67**



\* Actual lifting capacity can deviate 10%