



**Features & benefits** ↓

- Usable in all positions
- Protected against ejection of the plunger
- Protected against overpressure on return side
- Flat saddle
  - Prevents damage to the plunger
  - Easy to replace with tilting saddle

**Standard** supplied with ↓

- High Flow female coupler A 118
- Flat saddle

**Available** on request ↓

- Cylinders manufactured in conformity with customer specifications
- Collar thread
- Base mounting holes

Tilting Saddles	page	97
Hydraulic Pumps	page	139
Hydraulic Hoses	page	166
Pressure Gauges	page	171



Protected against overpressure on return side

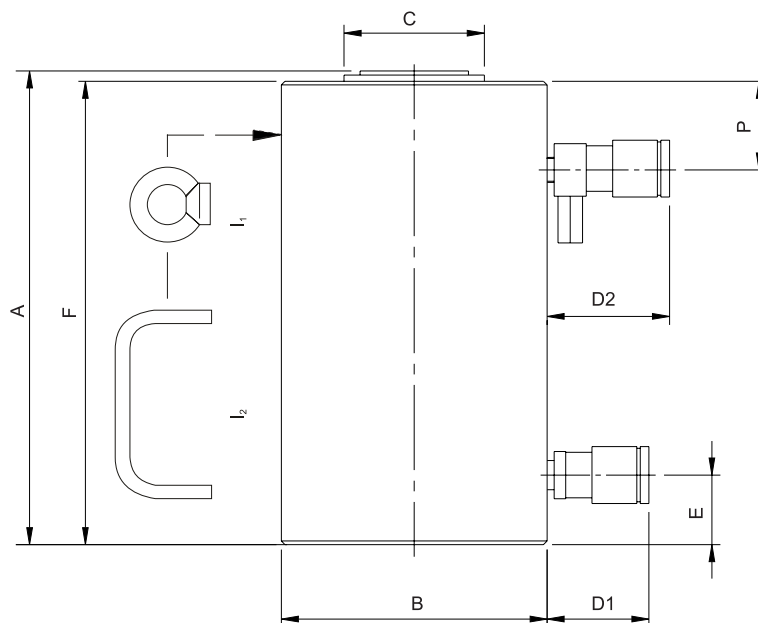


## High Tonnage Cylinders - Hydraulic Return ↓

model	HJ 50 H 15	HJ 50 H 30	HJ 75 H 15	HJ 75 H 30	HJ 100 H 5	HJ 100 H 15
art no	100.122.002	100.122.022	100.122.003	100.122.004	100.122.009	100.122.052
max. working pressure	bar/Mpa	720 / 72	720 / 72	720 / 72	720 / 72	720 / 72
tonnage	t	50	50	75	75	100
stroke	mm	150	300	150	300	150
closed height	mm	282	463	347	497	309
capacity	kN/t	510.3 / 52	510.3 / 52	747.9 / 76.3	747.9 / 76.3	1029.3 / 105
effective pressure area (press)	cm <sup>2</sup>	70.9	70.9	103.9	103.9	143
effective pressure area (retract)	cm <sup>2</sup>	20.6	20.6	53.6	53.6	56.6
required oil content (press)	cc	1064	2127	1559	3117	2145
required oil content (retract)	cc	309	620	755	1509	848
connection		A 118	A 118	A 118	A 118	A 118
cylinder type		high tonnage	high tonnage	high tonnage	high tonnage	high tonnage
acting type		double	double	double	double	double
return type		hydraulic	hydraulic	hydraulic	hydraulic	hydraulic
material		steel	steel	steel	steel	steel
weight, ready for use	kg	27.0	44.0	46.0	63.0	53.0

## High Tonnage Cylinders - Hydraulic Return (dimensions) ↓

model	HJ 50 H 15	HJ 50 H 30	HJ 75 H 15	HJ 75 H 30	HJ 100 H 5	HJ 100 H 15
dimension A	mm	282	463	347	497	309
dimension B	mm	130	130	156	156	178
dimension C	mm	80	80	80	80	105
dimension D1	mm	70	70	70	70	70
dimension D2	mm	85	85	85	85	85
dimension E	mm	25	38	47	47	52
dimension F	mm	275	456	340	490	302
dimension P	mm	70	70	83	83	52
l type		l <sub>2</sub>	l <sub>2</sub>	l <sub>2</sub>	l <sub>1</sub>	l <sub>1</sub>

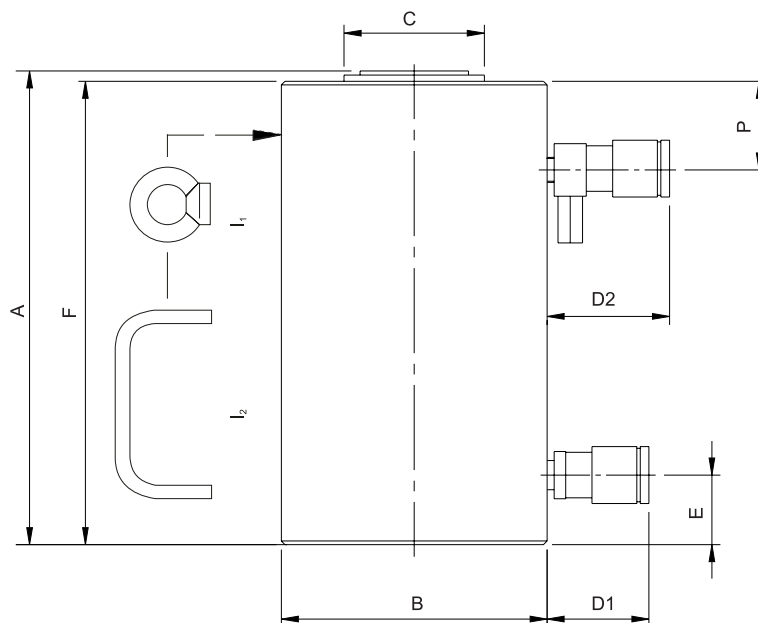


**High Tonnage Cylinders - Hydraulic Return**


model	HJ 100 H 30	HJ 150 H 15	HJ 150 H 30	HJ 200 H 15	HJ 200 H 30	HJ 300 H 15
art no	100.122.054	100.122.061	100.122.062	100.122.071	100.122.072	100.122.084
max. working pressure	bar/Mpa 720 / 72	720 / 72	720 / 72	720 / 72	720 / 72	720 / 72
tonnage	t 100	150	150	200	200	300
stroke	mm 300	150	300	150	300	150
closed height	mm 497	317	502	327	507	382
capacity	kN/t 1029.3 / 105	1538.9 / 156.9	1538.9 / 156.9	2040.6 / 208.1	2040.6 / 208.1	2933 / 299.1
effective pressure area (press)	cm <sup>2</sup> 143	213.8	213.8	283.5	283.5	415.5
effective pressure area (retract)	cm <sup>2</sup> 56.6	110	110	82.5	82.5	131.9
required oil content (press)	cc 4290	3207	6414	4253	8505	6225
required oil content (retract)	cc 1695	1650	3300	1238	2475	1965
connection	A 118	A 118	A 118	A 118	A 118	A 118
cylinder type	high tonnage	high tonnage	high tonnage	high tonnage	high tonnage	high tonnage
acting type	double	double	double	double	double	double
return type	hydraulic	hydraulic	hydraulic	hydraulic	hydraulic	hydraulic
material	steel	steel	steel	steel	steel	steel
weight, ready for use	kg 85.0	76.0	128.0	121.0	186.0	240.0

**High Tonnage Cylinders - Hydraulic Return (dimensions)**


model	HJ 100 H 30	HJ 150 H 15	HJ 150 H 30	HJ 200 H 15	HJ 200 H 30	HJ 300 H 15
dimension A	mm 497	317	502	327	507	382
dimension B	mm 178	227	227	261	261	316
dimension C	mm 105	115	115	160	160	190
dimension D1	mm 70	70	70	70	70	70
dimension D2	mm 85	85	85	85	85	85
dimension E	mm 52	57	57	60	60	80
dimension F	mm 490	310	495	320	500	370
dimension P	mm 70	55	70	60	70	75
l type	l <sub>1</sub>	l <sub>1</sub>	l <sub>1</sub>	l <sub>1</sub>	l <sub>1</sub>	l <sub>1</sub>



**High Tonnage Cylinders - Hydraulic Return**


model	HJ 300 H 30	HJ 400 H 15	HJ 400 H 30	HJ 500 H 15	HJ 500 H 30
art no	100.122.083	100.122.091	100.122.092	100.122.043	100.122.038
max. working pressure	bar/Mpa 720 / 72	720 / 72	720 / 72	720 / 72	720 / 72
tonnage	t 300	400	400	500	500
stroke	mm 300	150	300	150	300
closed height	mm 547	402	572	442	587
capacity	kN/t 2933 / 299.1	3750 / 382.4	3750 / 382.4	4994 / 509.2	4994 / 509.2
effective pressure area (press)	cm <sup>2</sup> 415.5	530.9	530.9	707	707
effective pressure area (retract)	cm <sup>2</sup> 131.9	216.7	216.7	360.3	360.3
required oil content (press)	cc 12450	7950	15900	10605	21210
required oil content (retract)	cc 3930	3238	6476	5400	10800
connection	A 118	A 118	A 118	A 118	A 118
cylinder type	high tonnage	high tonnage	high tonnage	high tonnage	high tonnage
acting type	double	double	double	double	double
return type	hydraulic	hydraulic	hydraulic	hydraulic	hydraulic
material	steel	steel	steel	steel	steel
weight, ready for use	kg 360.0	325.0	413.0	390.0	520.0

**High Tonnage Cylinders - Hydraulic Return (dimensions)**


model	HJ 300 H 30	HJ 400 H 15	HJ 400 H 30	HJ 500 H 15	HJ 500 H 30
dimension A	mm 547	402	572	442	587
dimension B	mm 316	358	358	412	412
dimension C	mm 190	200	200	210	210
dimension D1	mm 70	70	70	70	70
dimension D2	mm 85	85	85	85	85
dimension E	mm 80	76	76	85	85
dimension F	mm 540	395	565	435	580
dimension P	mm 75	80	80	90	90
l type	l <sub>1</sub>	l <sub>1</sub>	l <sub>1</sub>	l <sub>1</sub>	l <sub>1</sub>

