



**Features & benefits** ↓

- Usable in all positions
- Protected against ejection of the plunger
- Flat saddle
  - Prevents damage to the plunger
  - Easy to replace with tilting saddle

**Standard** supplied with ↓

- High Flow female coupler A 118
- Flat saddle

**Available** on request ↓

- Cylinders manufactured in conformity with customer specifications
- Collar thread
- Base mounting holes

Tilting Saddles	page	97
Hydraulic Pumps	page	139
Hydraulic Hoses	page	166
Pressure Gauges	page	171



Flat saddle

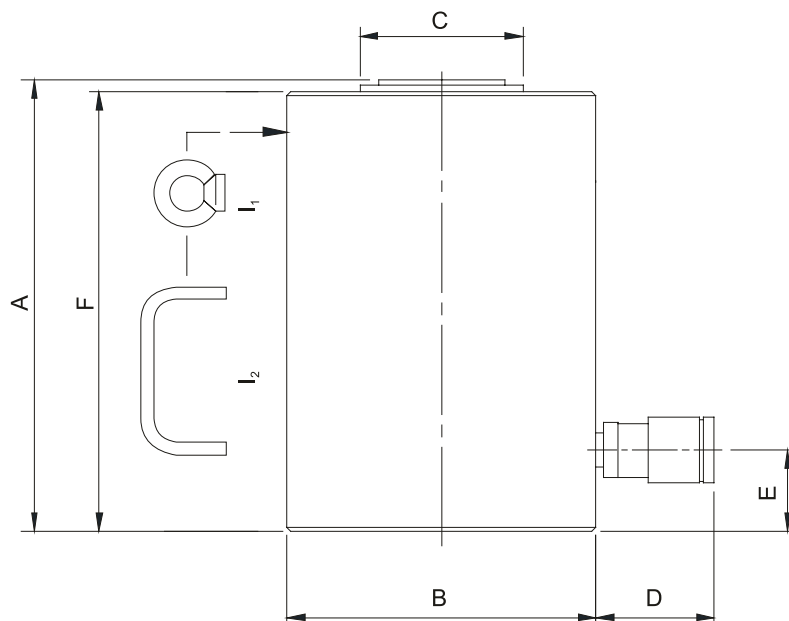


**High Tonnage Cylinders - Gravity Return**


model	HJ 50 G 6	HJ 50 G 15	HJ 50 G 30	HJ 75 G 15	HJ 75 G 30	HJ 100 G 6	
art no	100.112.073	100.112.035	100.112.036	100.112.037	100.112.038	100.112.093	
max. working pressure	bar/Mpa	720 / 72	720 / 72	720 / 72	720 / 72	720 / 72	
tonnage	t	50	50	50	75	75	100
stroke	mm	60	150	300	150	300	60
closed height	mm	142	282	463	347	497	158
capacity	kN/t	510.3 / 52	510.3 / 52	510.3 / 52	747.9 / 76.3	747.9 / 76.3	1029.3 / 105
effective pressure area	cm <sup>2</sup>	70.9	70.9	70.9	103.9	103.9	143
required oil content (effective)	cc	425	1064	2127	1559	3117	860
connection		A 118	A 118	A 118	A 118	A 118	A 118
cylinder type		high tonnage	high tonnage	high tonnage	high tonnage	high tonnage	high tonnage
acting type		single	single	single	single	single	single
return type		gravity	gravity	gravity	gravity	gravity	gravity
material		steel	steel	steel	steel	steel	steel
weight, ready for use	kg	12.5	27.0	39.5	46.0	63.0	29.0

**High Tonnage Cylinders - Gravity Return (dimensions)**


model	HJ 50 G 6	HJ 50 G 15	HJ 50 G 30	HJ 75 G 15	HJ 75 G 30	HJ 100 G 6	
dimension A	mm	142	282	463	347	497	158
dimension B	mm	130	130	130	156	156	185
dimension C	mm	80	80	80	80	80	105
dimension D	mm	70	70	70	70	70	70
dimension E	mm	20	25	38	47	47	27
dimension F	mm	135	275	456	340	490	151
I type			l <sub>2</sub>	l <sub>2</sub>	l <sub>1</sub>	l <sub>1</sub>	l <sub>2</sub>

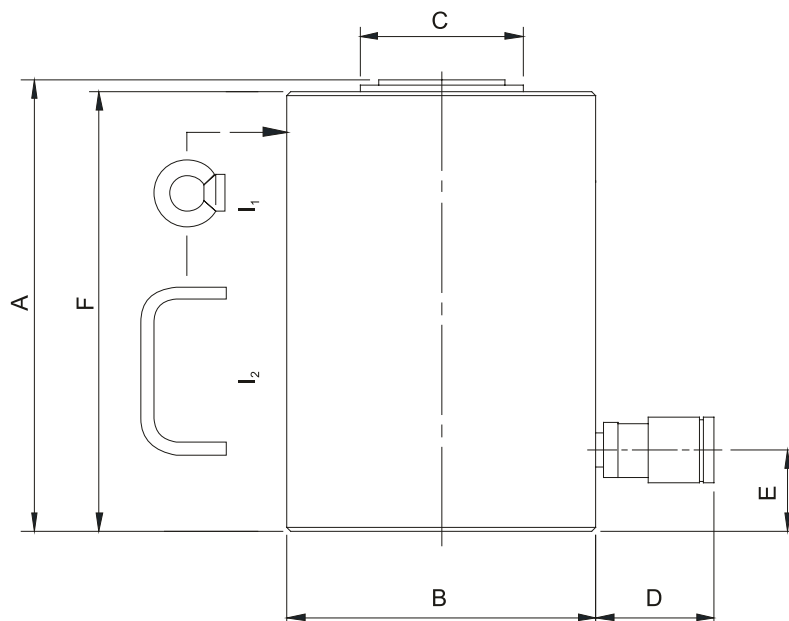


**High Tonnage Cylinders - Gravity Return**


model	HJ 100 G 15	HJ 100 G 30	HJ 150 G 15	HJ 150 G 30	HJ 200 G 15	HJ 200 G 30
art no	100.112.039	100.112.040	100.112.046	100.112.047	100.112.048	100.112.049
max. working pressure	bar/Mpa 720 / 72	720 / 72	720 / 72	720 / 72	720 / 72	720 / 72
tonnage	t 100	100	150	150	200	200
stroke	mm 150	300	150	300	150	300
closed height	mm 309	497	317	502	327	507
capacity	kN/t 1029.3 / 105	1029.3 / 105	1538.9 / 156.9	1538.9 / 156.9	2040.6 / 208.1	2040.6 / 208.1
effective pressure area	cm <sup>2</sup> 143	143	213.8	213.8	283.5	283.5
required oil content (effective)	cc 2145	4290	3207	6414	4253	8505
connection	A 118	A 118	A 118	A 118	A 118	A 118
cylinder type	high tonnage	high tonnage	high tonnage	high tonnage	high tonnage	high tonnage
acting type	single	single	single	single	single	single
return type	gravity	gravity	gravity	gravity	gravity	gravity
material	steel	steel	steel	steel	steel	steel
weight, ready for use	kg 51.0	82.0	74.6	125.3	120.0	184.0

**High Tonnage Cylinders - Gravity Return (dimensions)**


model	HJ 100 G 15	HJ 100 G 30	HJ 150 G 15	HJ 150 G 30	HJ 200 G 15	HJ 200 G 30
dimension A	mm 309	497	317	502	327	507
dimension B	mm 178	178	227	227	261	261
dimension C	mm 105	105	115	115	160	160
dimension D	mm 70	70	70	70	70	70
dimension E	mm 52	52	57	57	60	60
dimension F	mm 302	490	310	495	320	500
I type	I <sub>1</sub>	I <sub>1</sub>	I <sub>1</sub>	I <sub>1</sub>	I <sub>1</sub>	I <sub>1</sub>



**High Tonnage Cylinders - Gravity Return**


model	HJ 300 G 15	HJ 300 G 30	HJ 400 G 15	HJ 400 G 30	HJ 500 G 15	HJ 500 G 30
art no	100.112.050	100.112.099	100.112.100	100.112.056	100.112.139	100.112.138
max. working pressure	bar/Mpa	720 / 72	720 / 72	720 / 72	720 / 72	720 / 72
tonnage	t	300	300	400	400	500
stroke	mm	150	300	150	300	150
closed height	mm	382	547	402	572	442
capacity	kN/t	2933 / 299.1	2933 / 299.1	3750 / 382.4	3750 / 382.4	4994 / 509.2
effective pressure area	cm <sup>2</sup>	415	415	530	530	707
required oil content (effective)	cc	6225	12450	7950	15900	10605
connection		A 118	A 118	A 118	A 118	A 118
cylinder type		high tonnage	high tonnage	high tonnage	high tonnage	high tonnage
acting type		single	single	single	single	single
return type		gravity	gravity	gravity	gravity	gravity
material		steel	steel	steel	steel	steel
weight, ready for use	kg	238.0	257.0	322.0	408.0	386.0

**High Tonnage Cylinders - Gravity Return (dimensions)**


model	HJ 300 G 15	HJ 300 G 30	HJ 400 G 15	HJ 400 G 30	HJ 500 G 15	HJ 500 G 30
dimension A	mm	382	547	402	572	442
dimension B	mm	316	316	358	358	412
dimension C	mm	190	190	200	200	210
dimension D	mm	70	70	70	70	70
dimension E	mm	70	70	76	76	85
dimension F	mm	370	540	395	565	435
I type		I <sub>1</sub>	I <sub>1</sub>	I <sub>1</sub>	I <sub>1</sub>	I <sub>1</sub>

